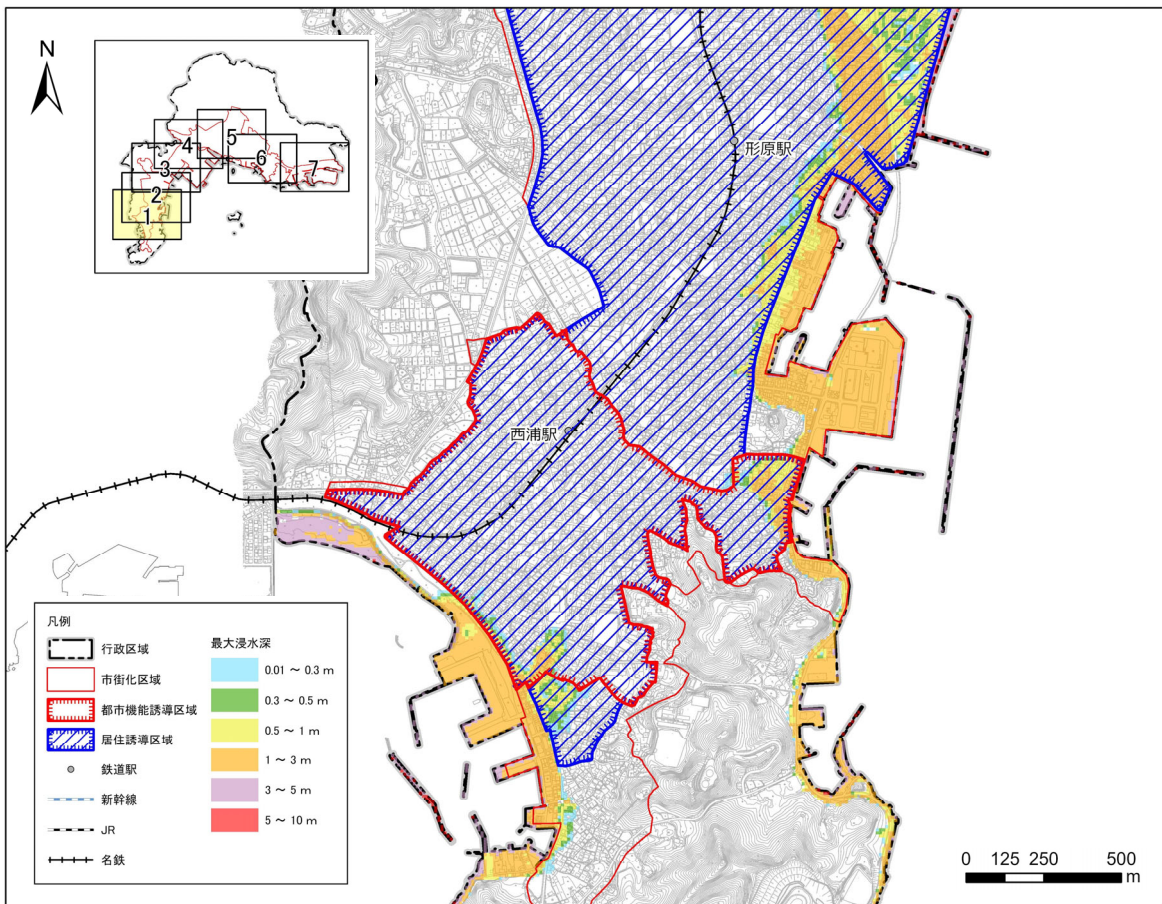
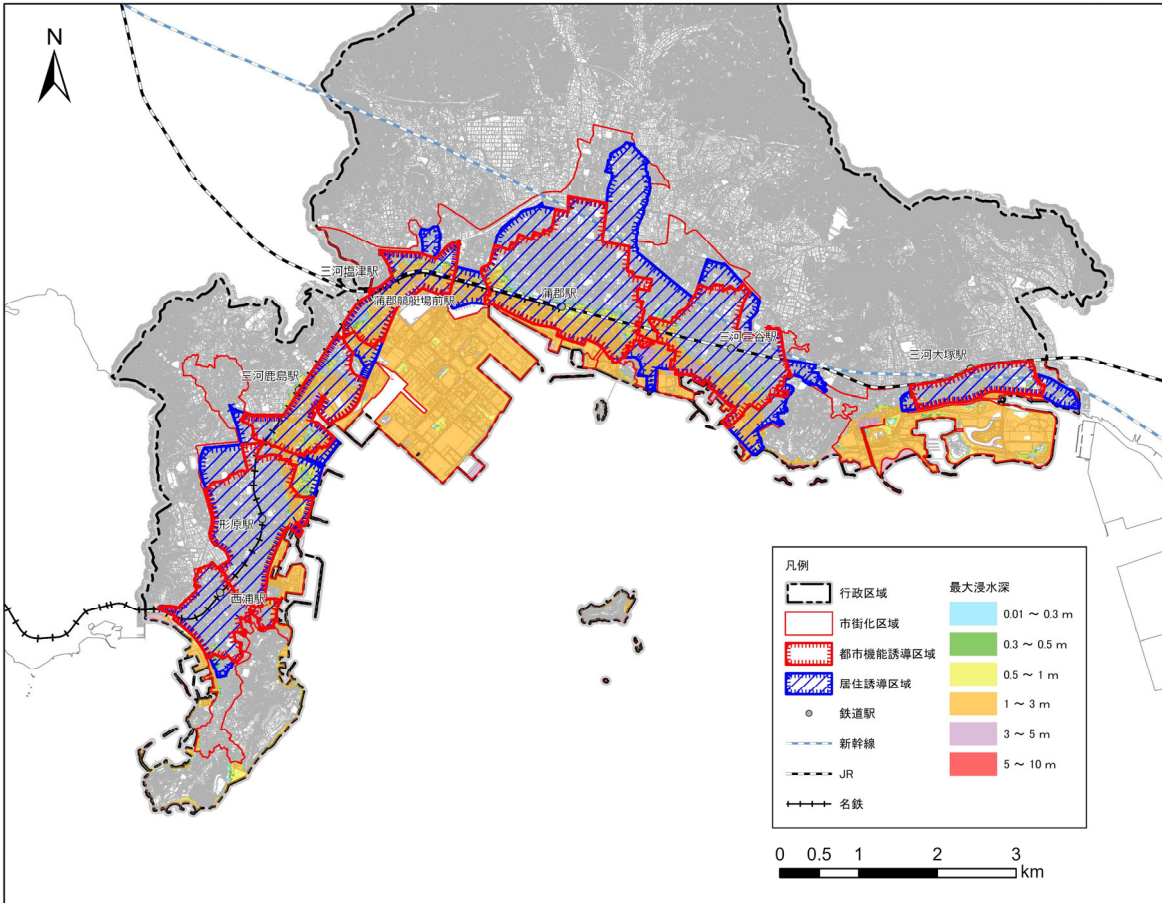
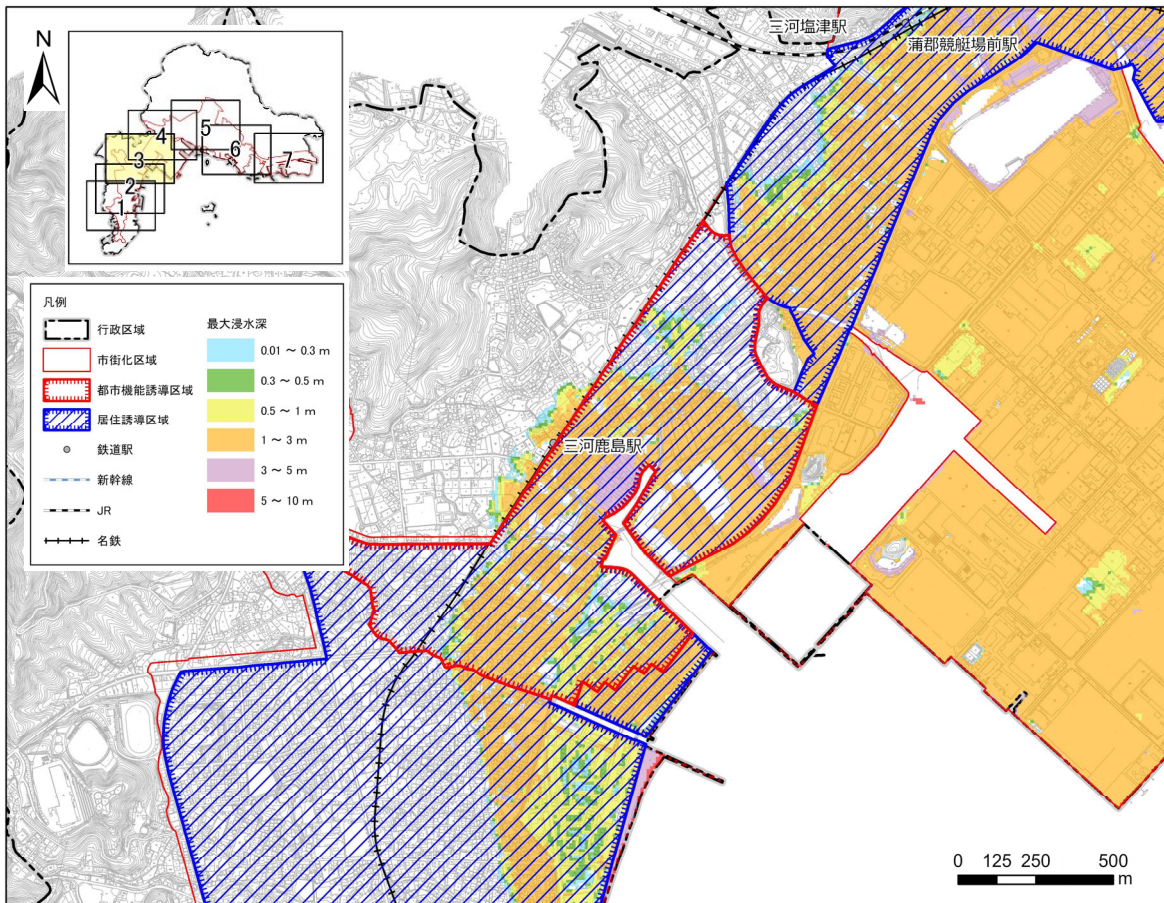
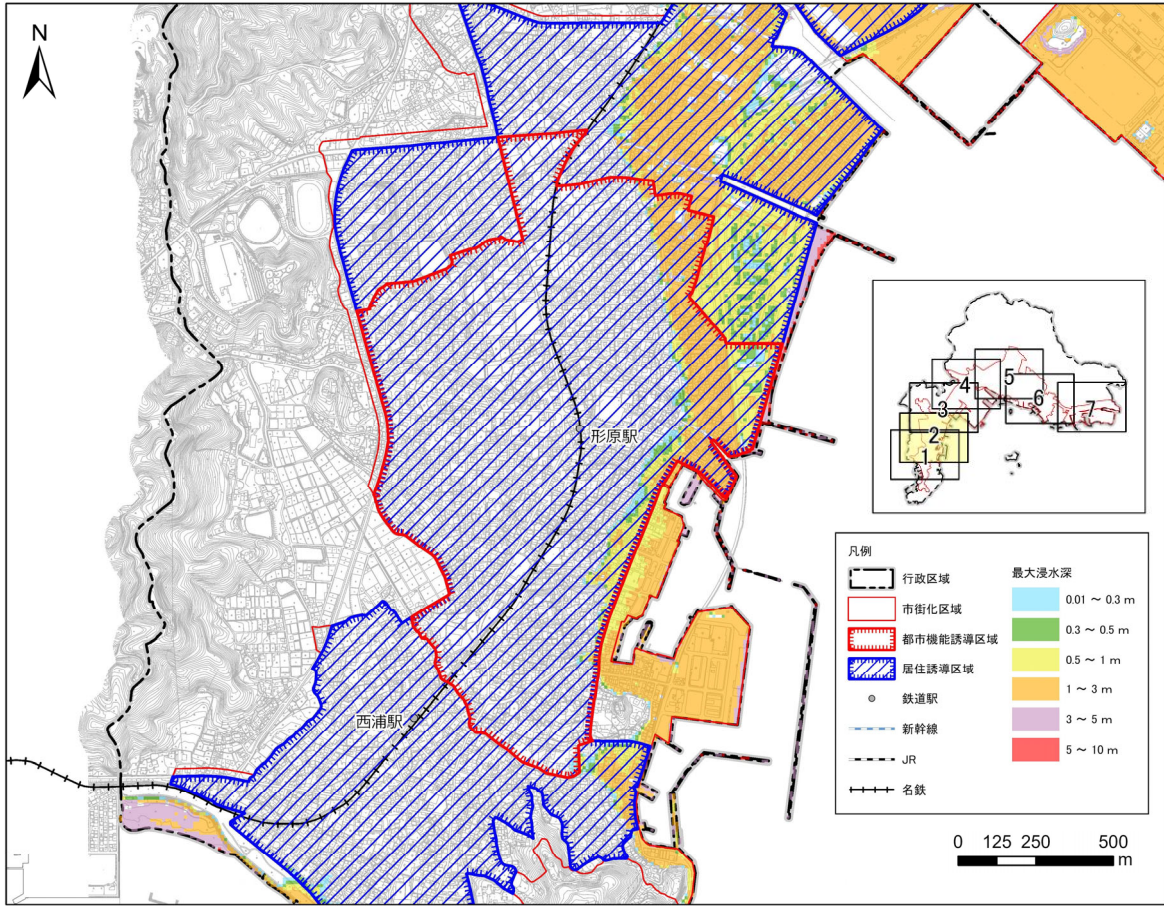


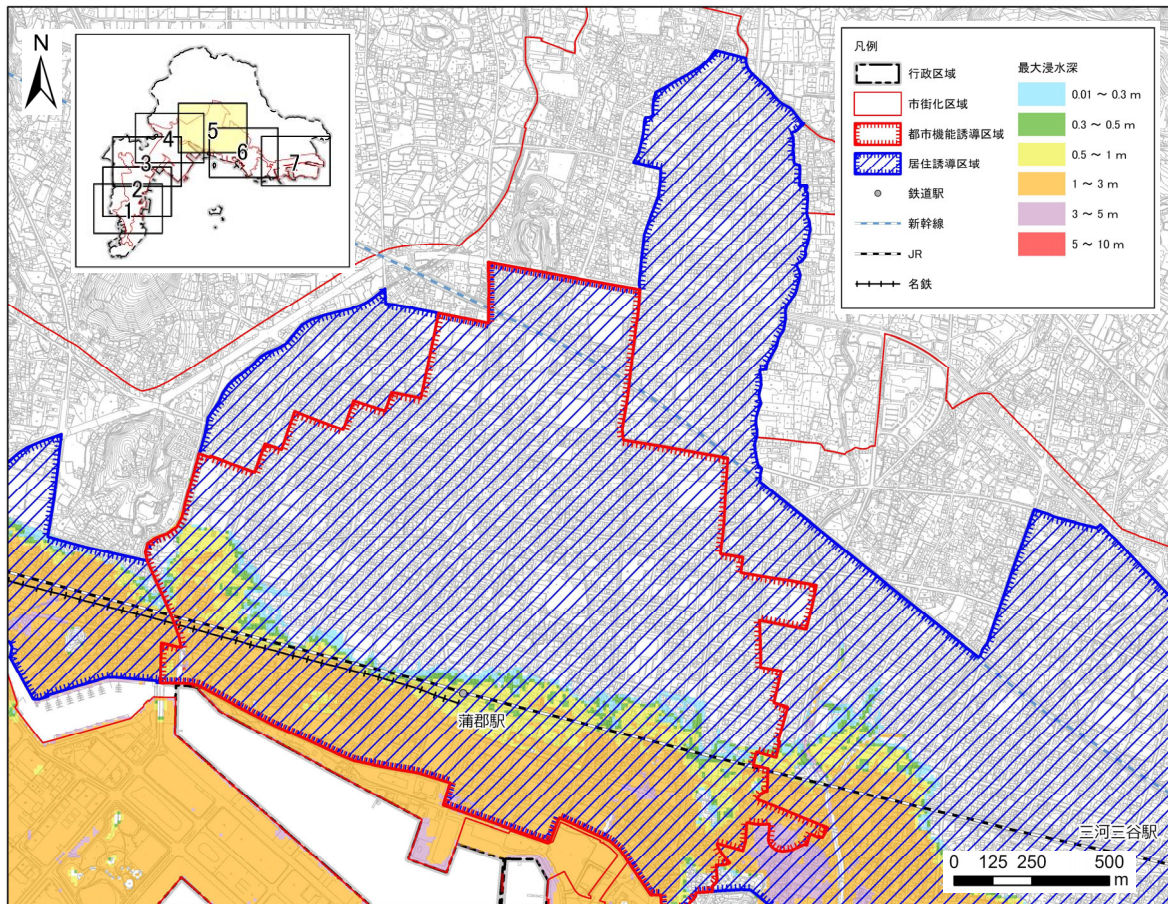
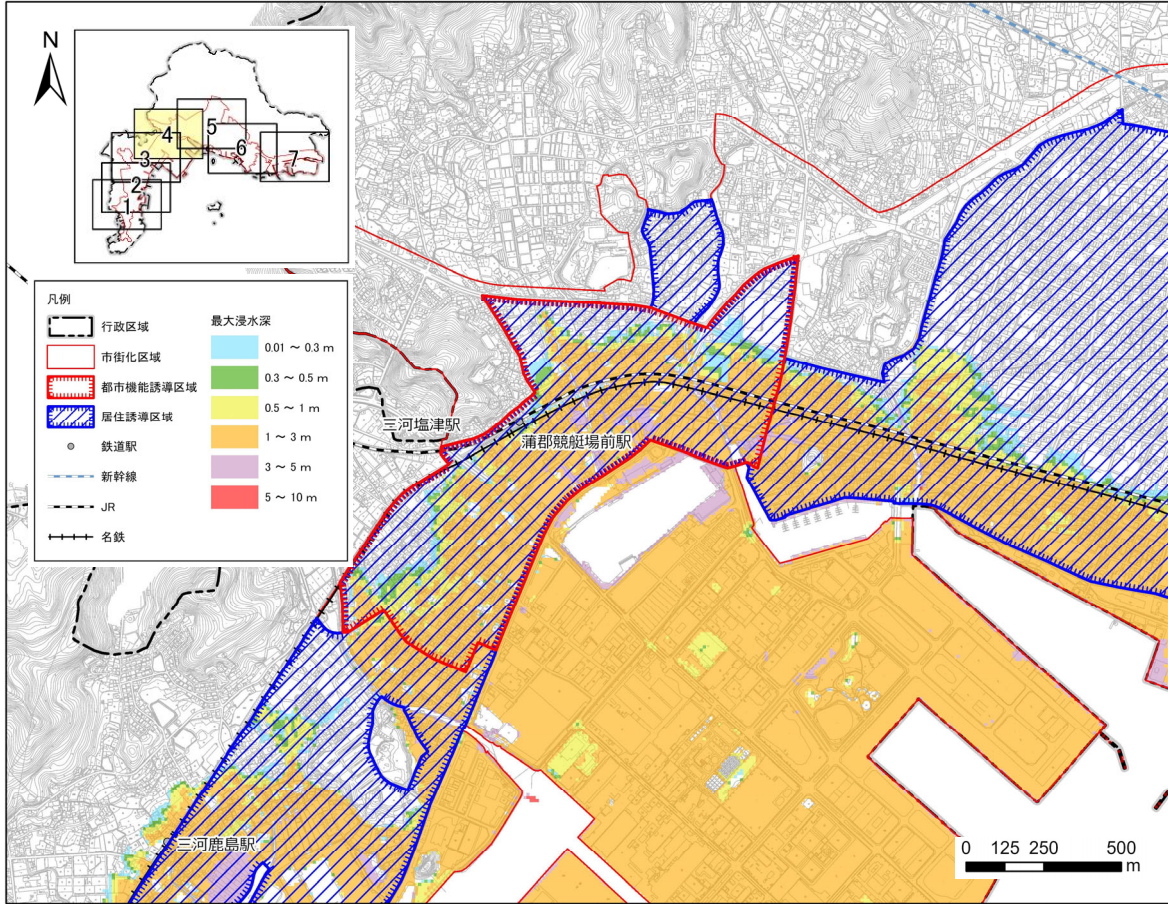


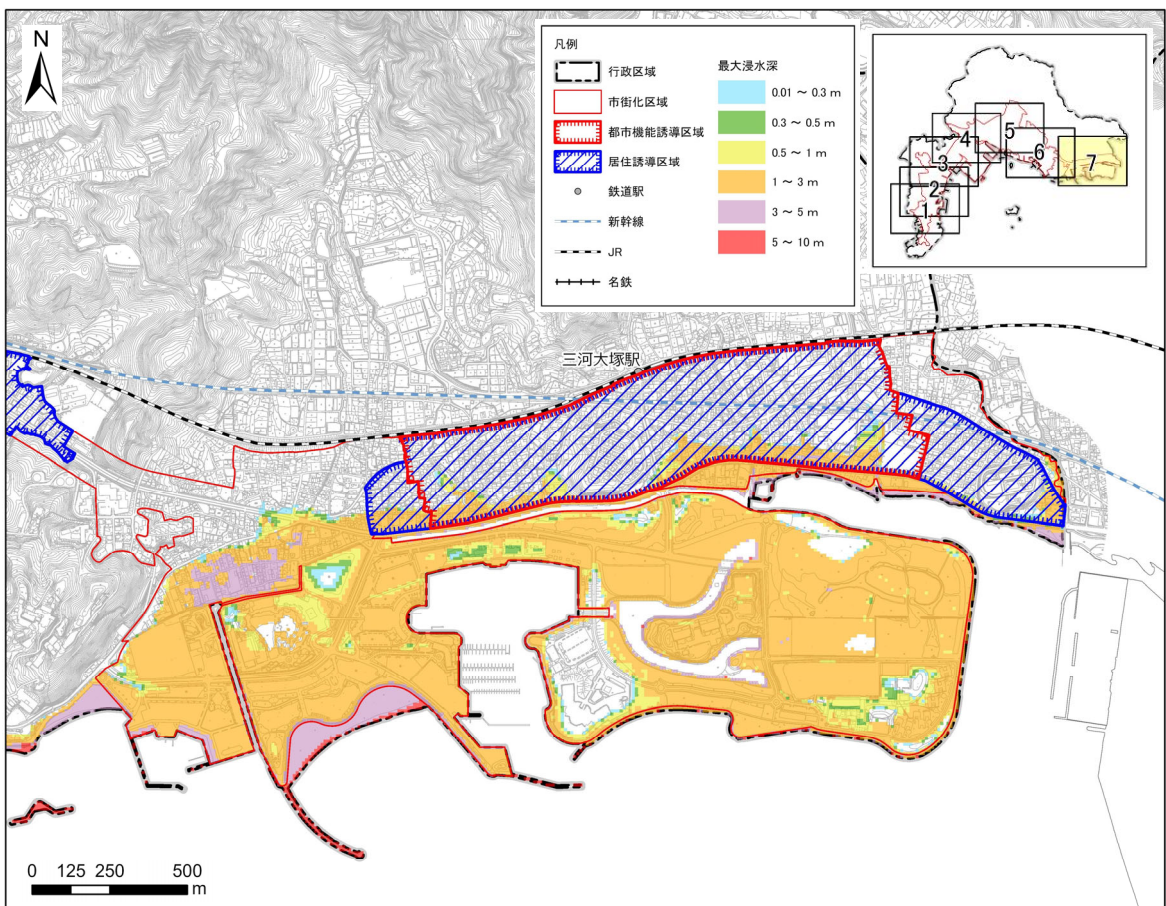
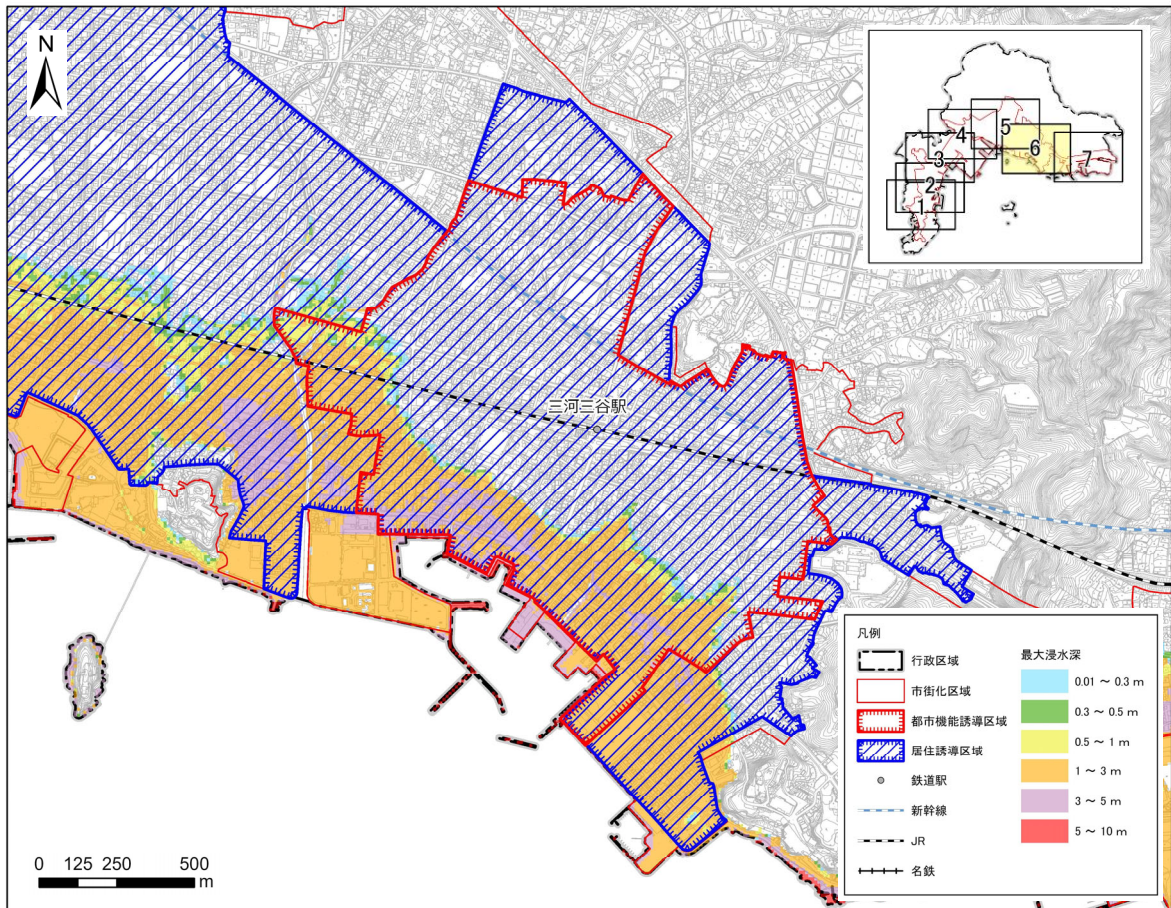
⑤ 高潮浸水想定 (L2) (令和 3 年度 愛知県作成)





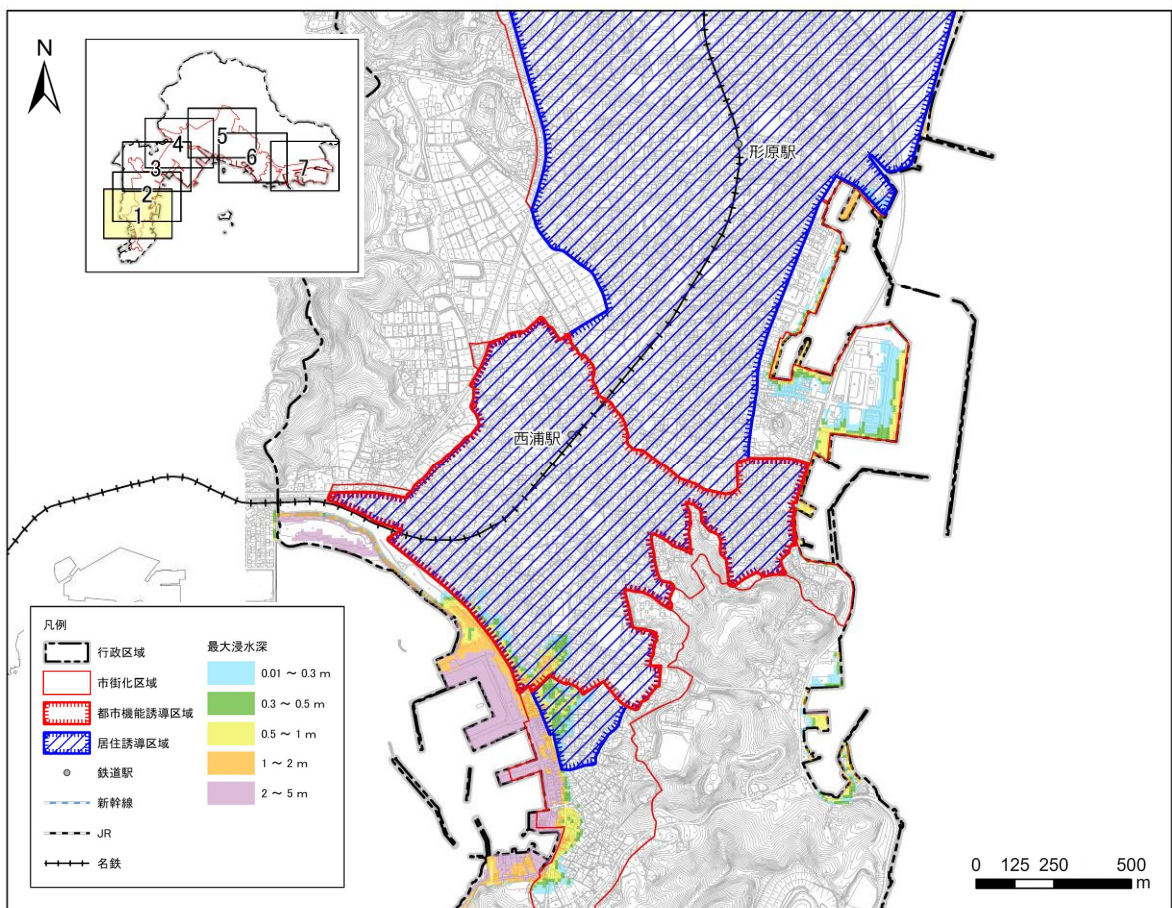
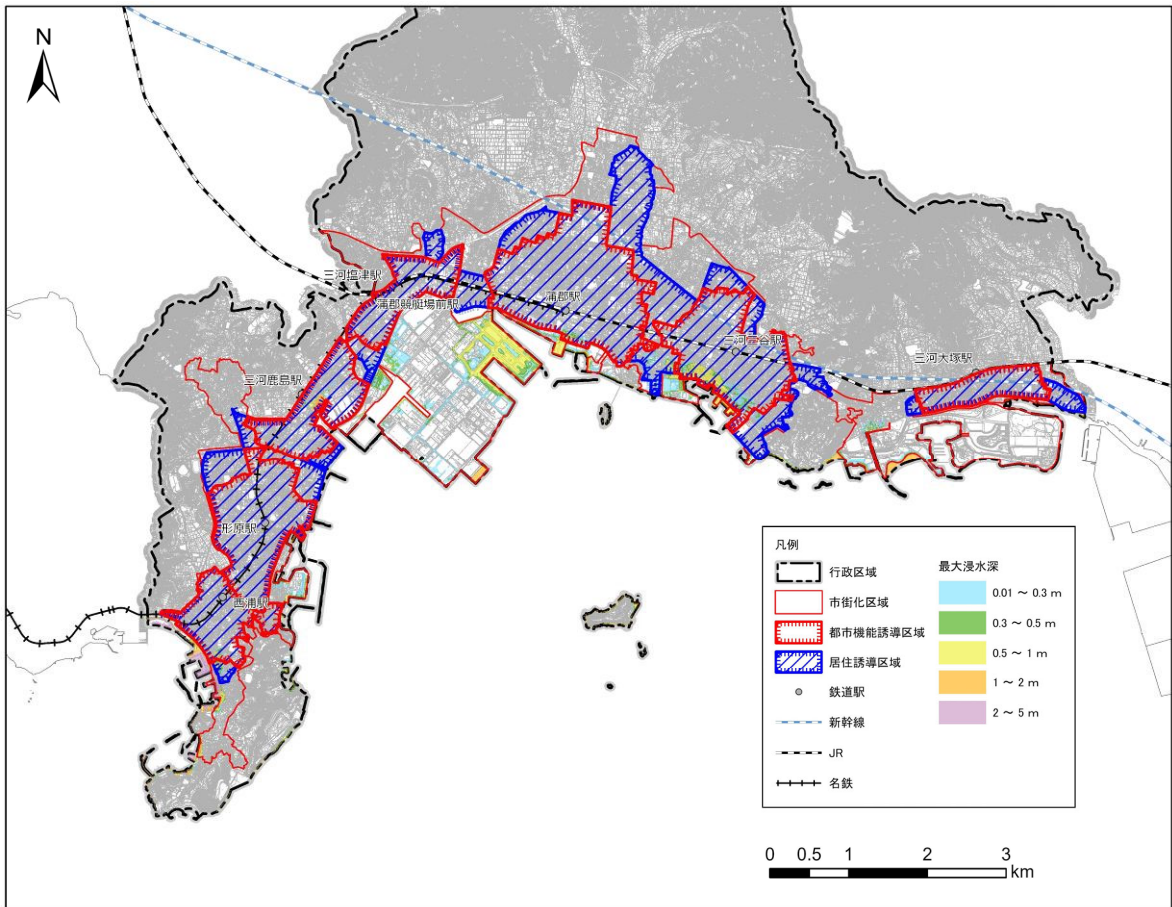
## 4 居住誘導区域の検討

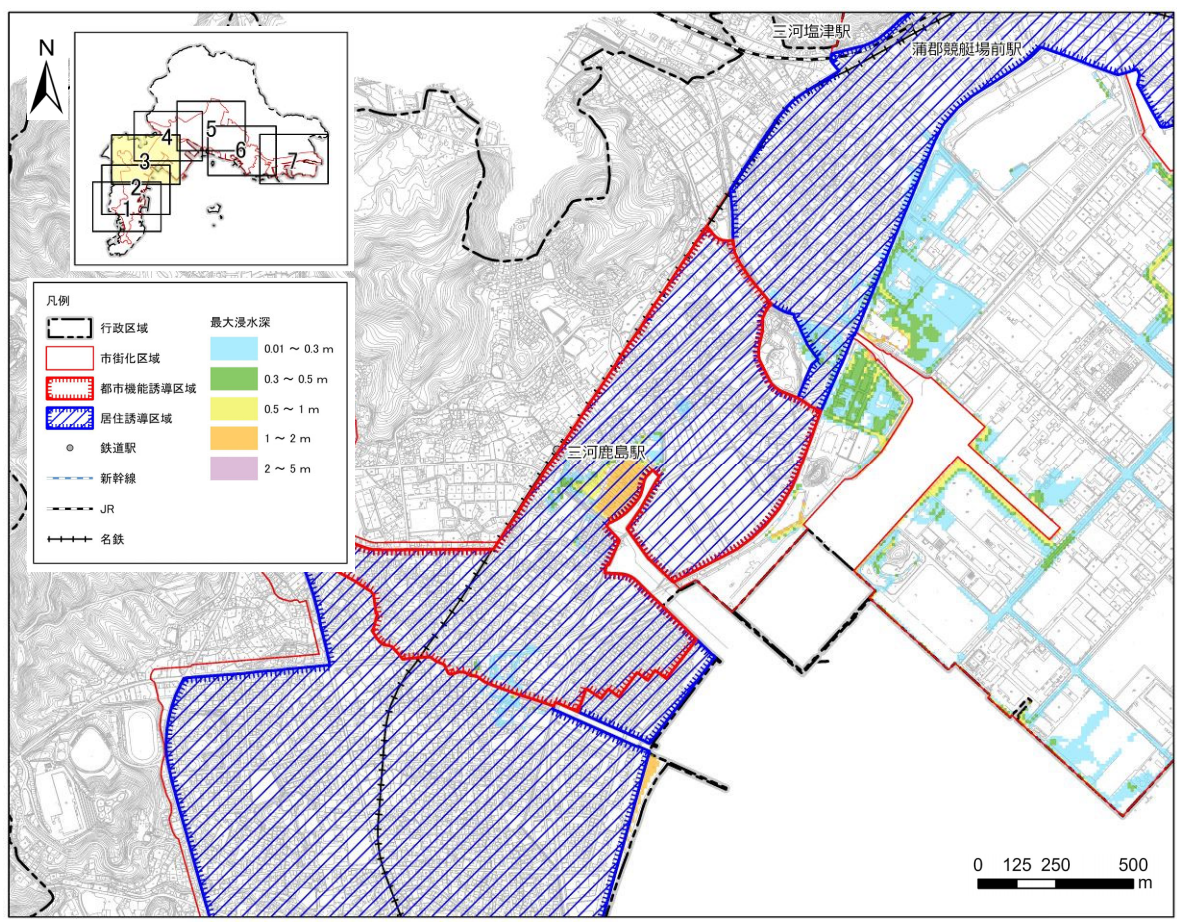
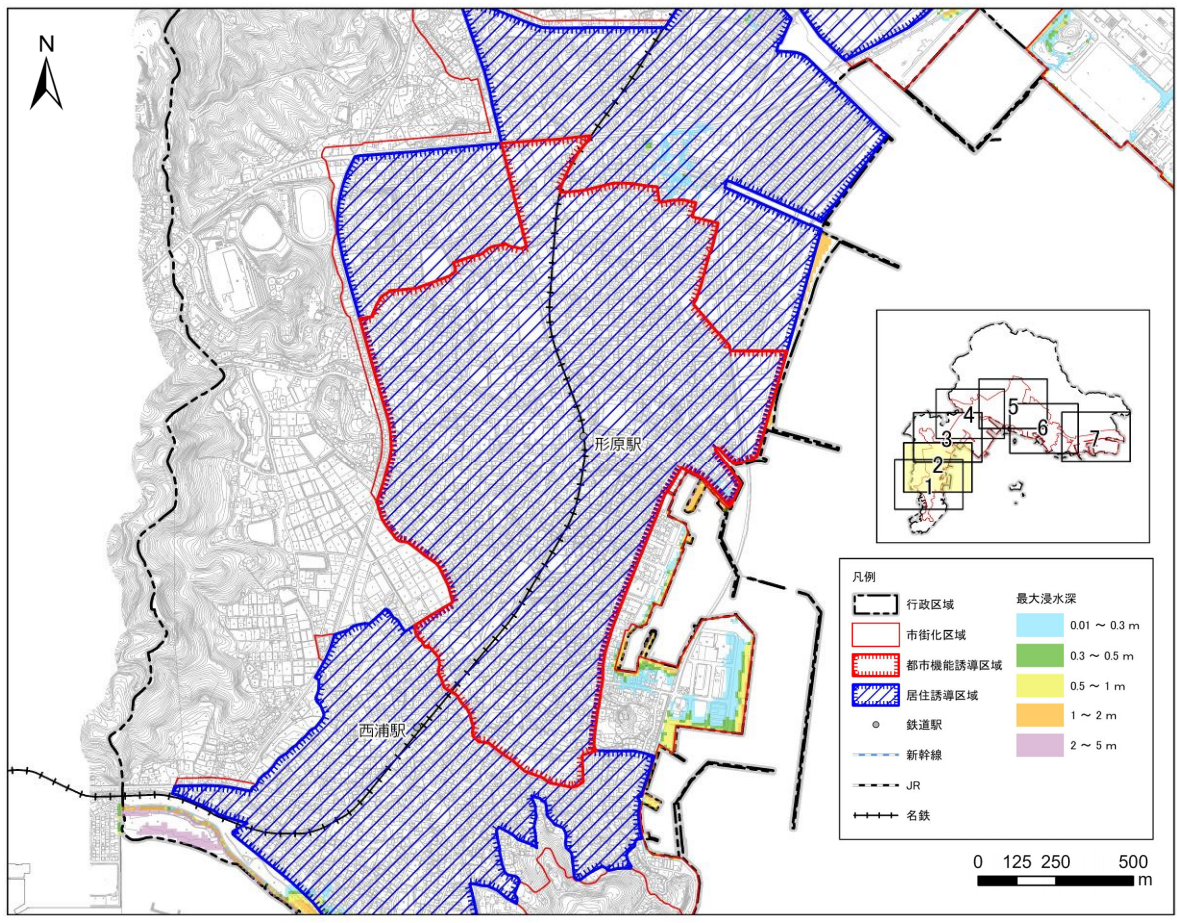




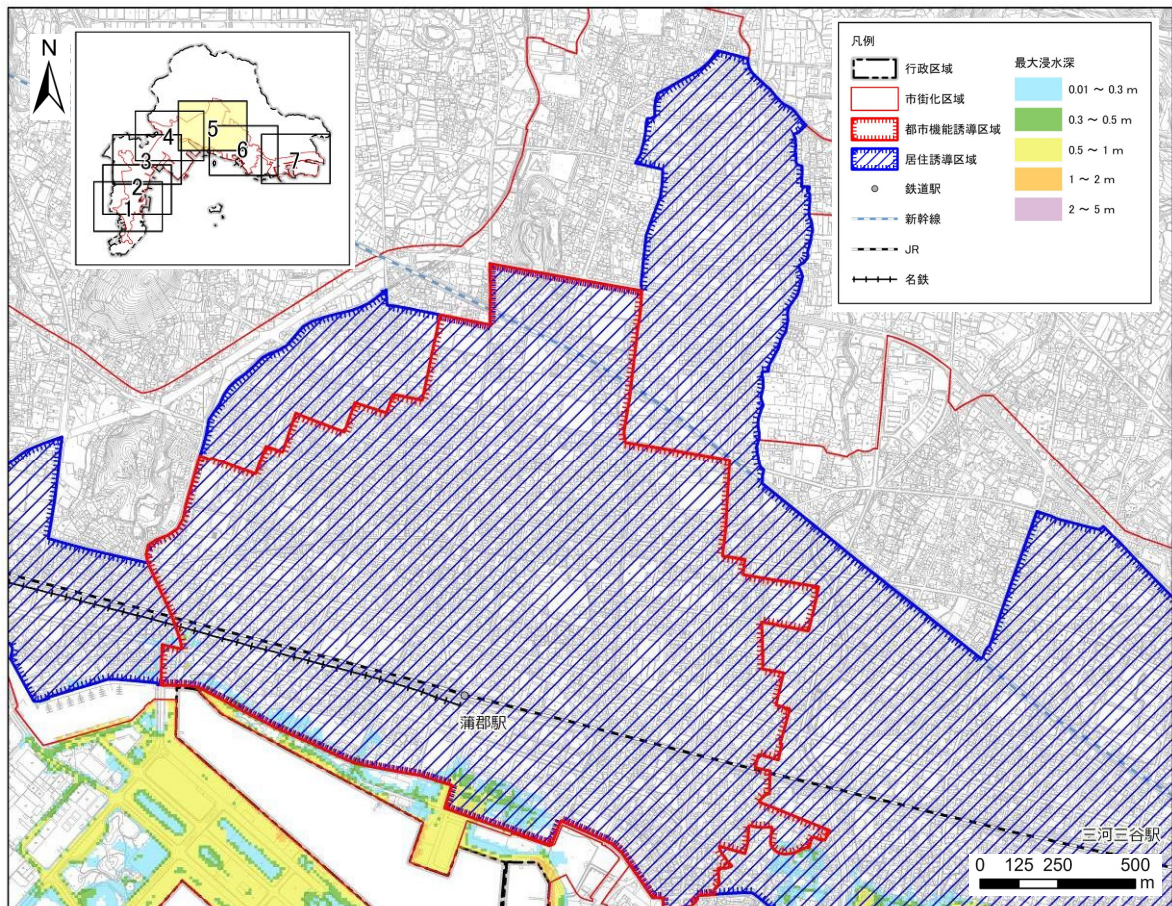
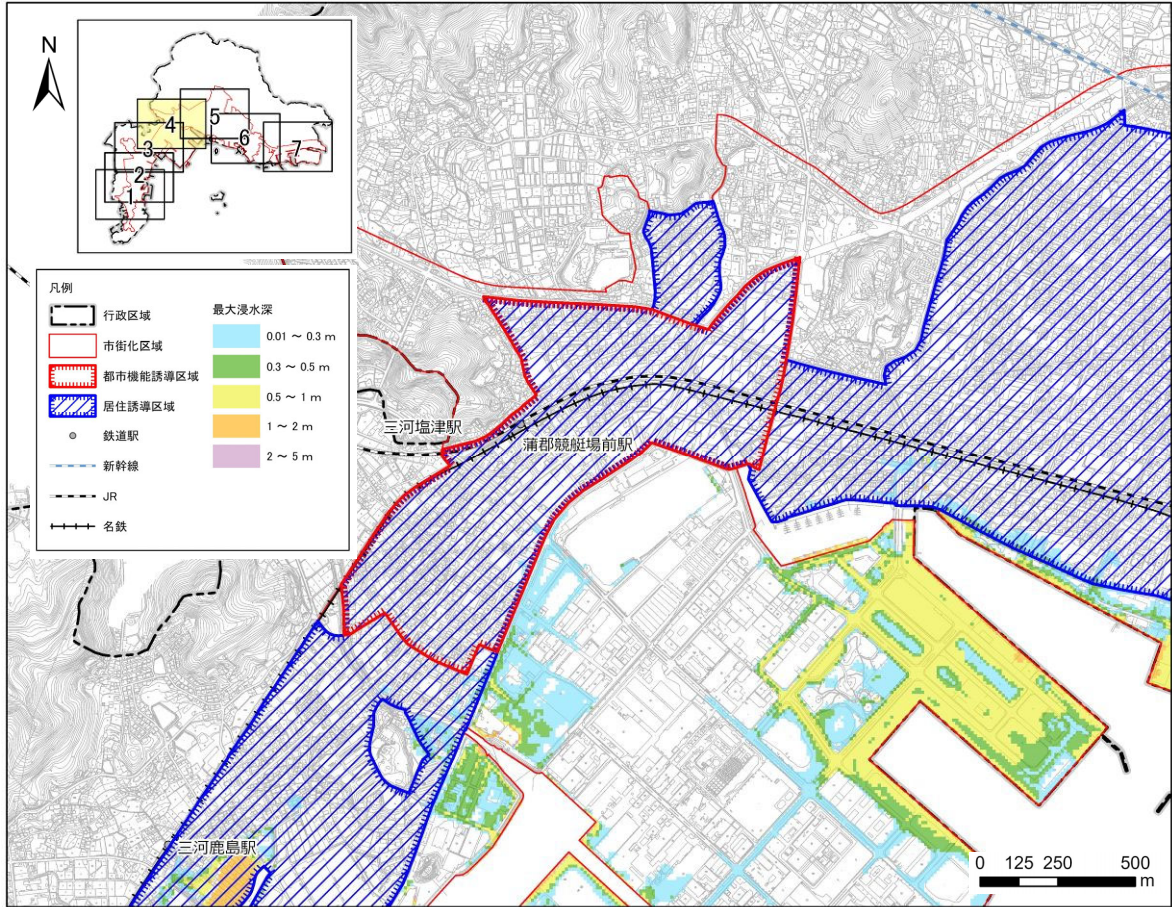


⑥ 津波浸水想定（令和元年度 愛知県作成）

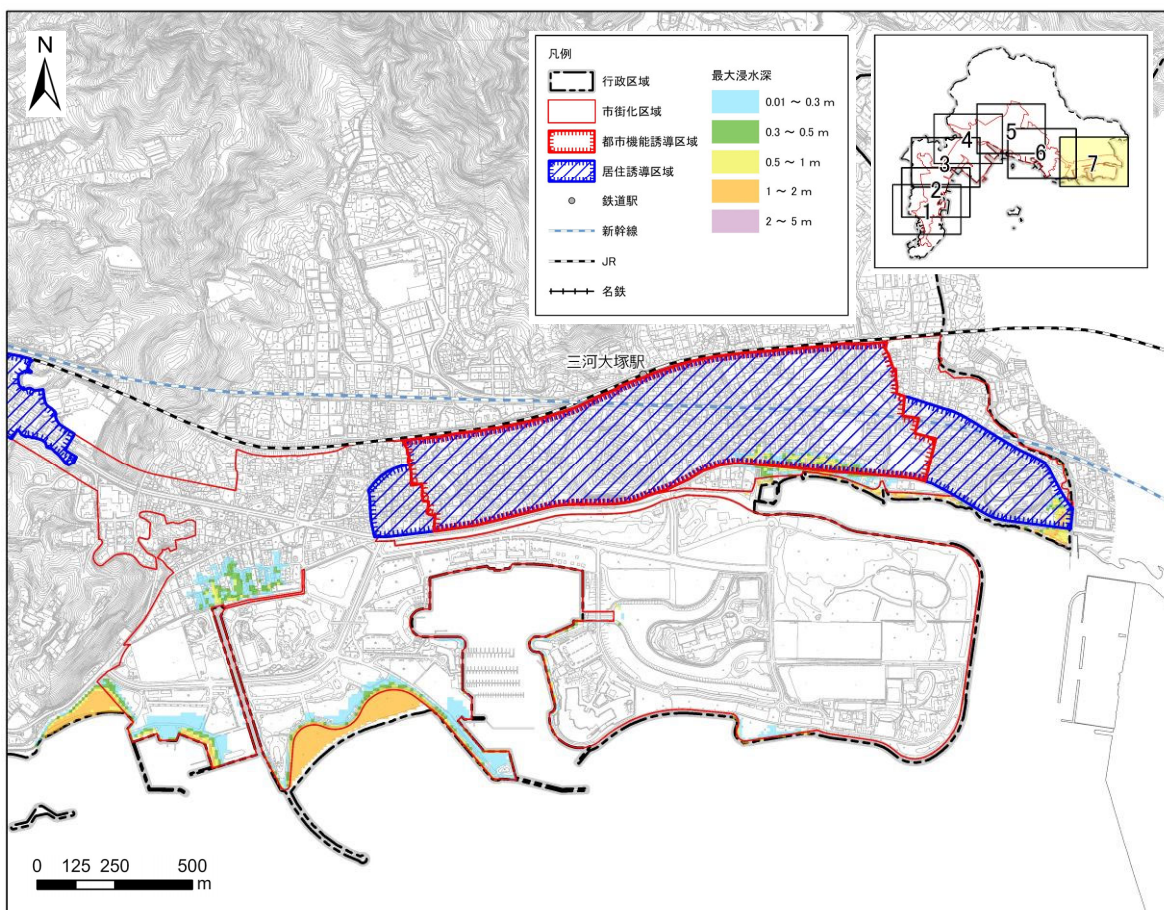
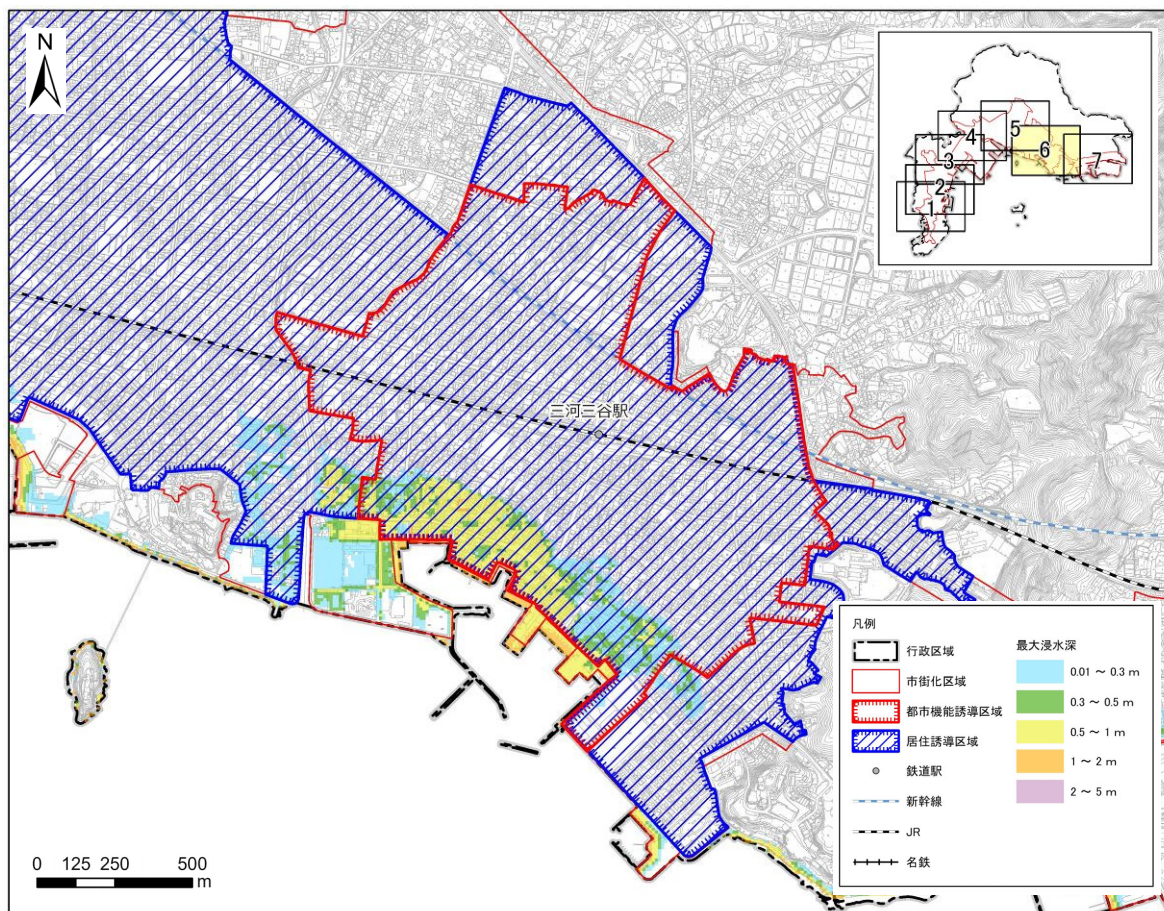




## 4 居住誘導区域の検討

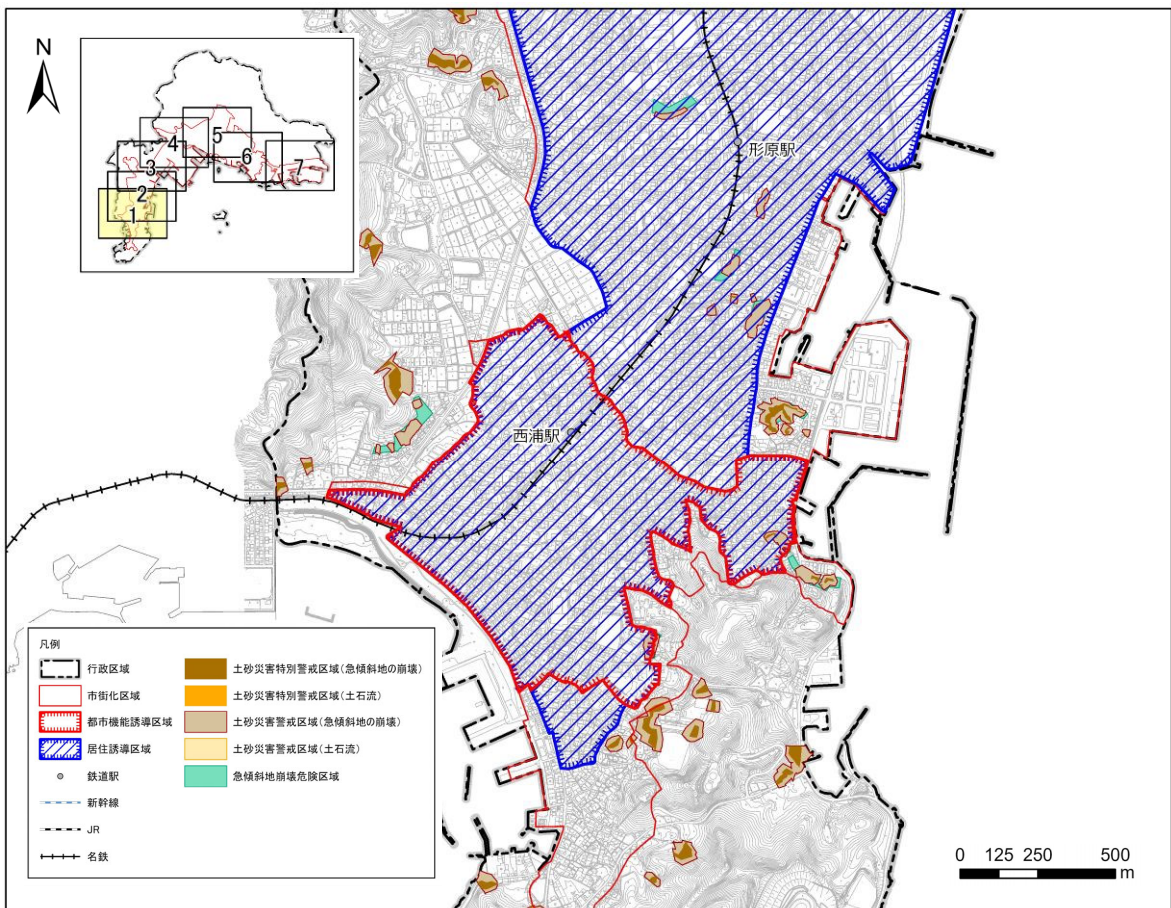
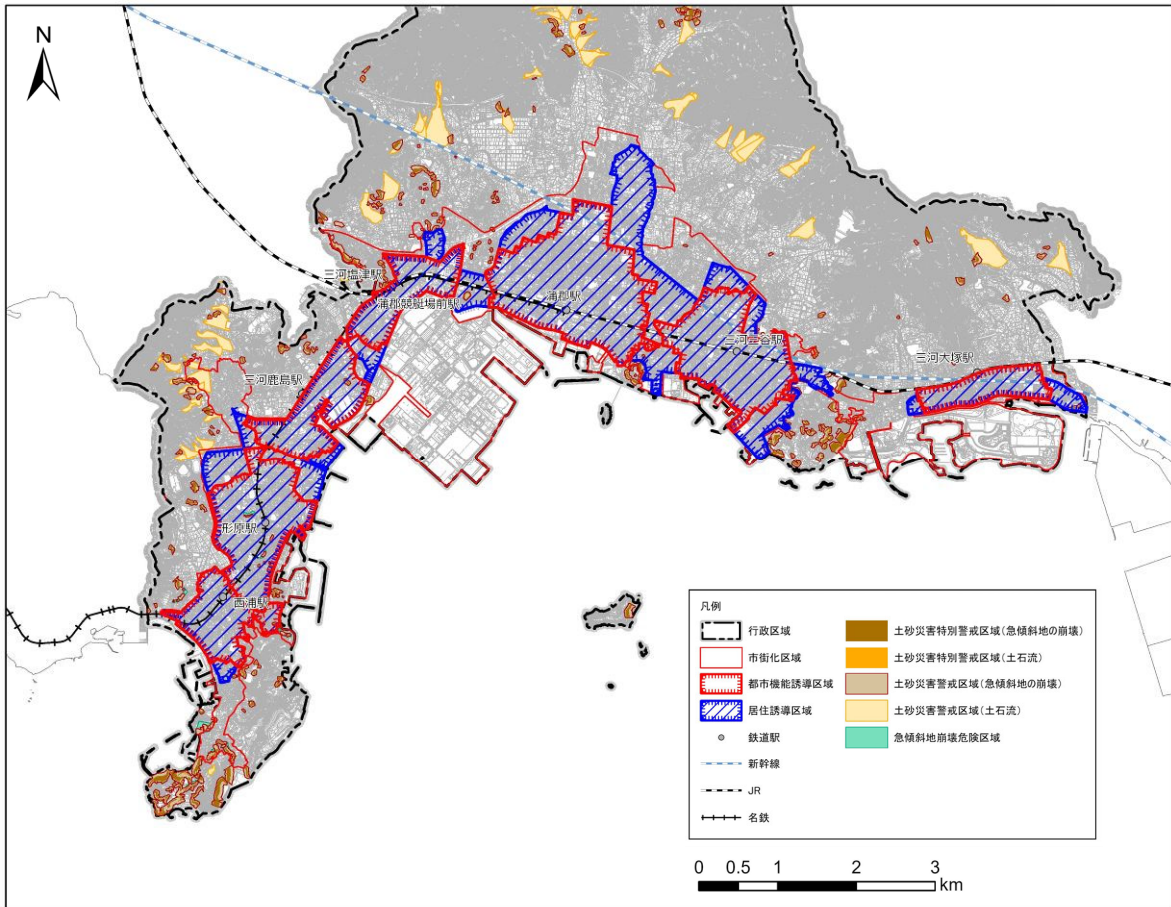


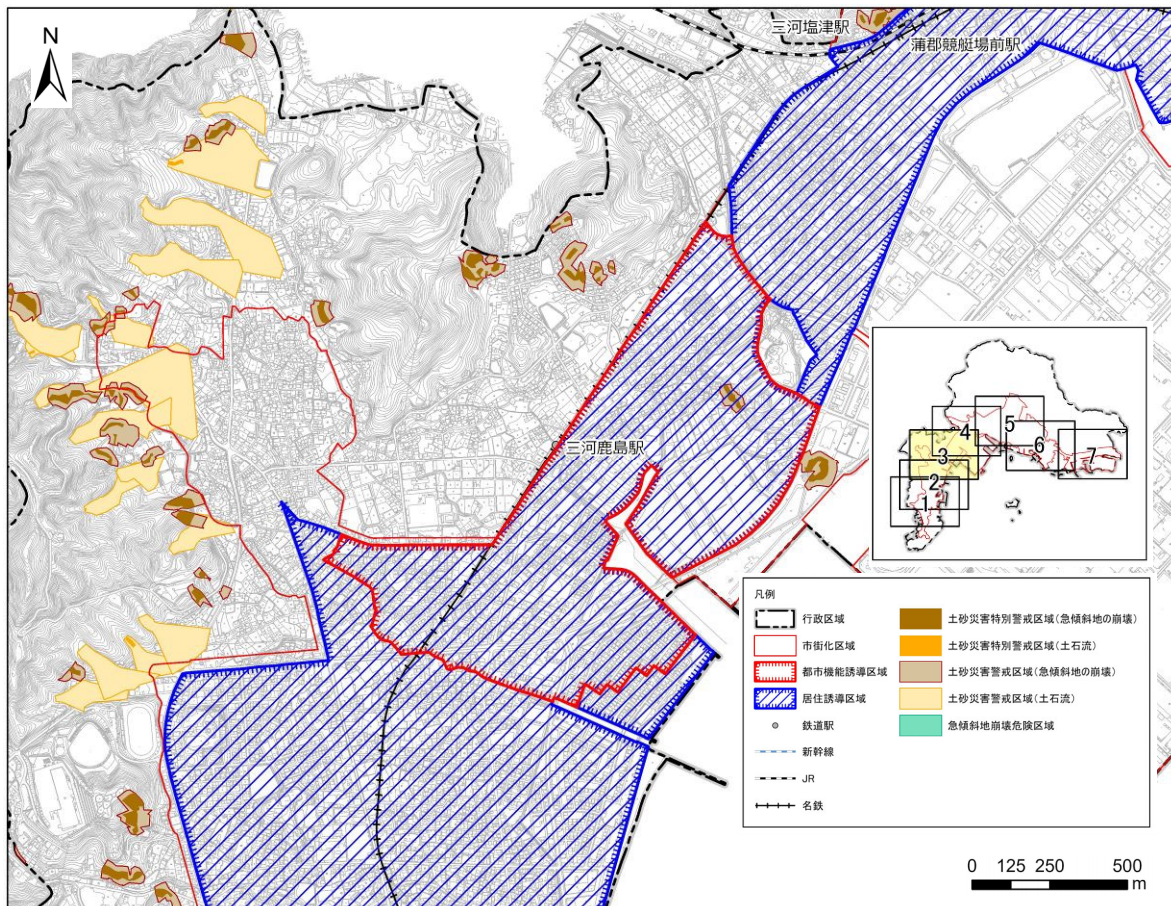
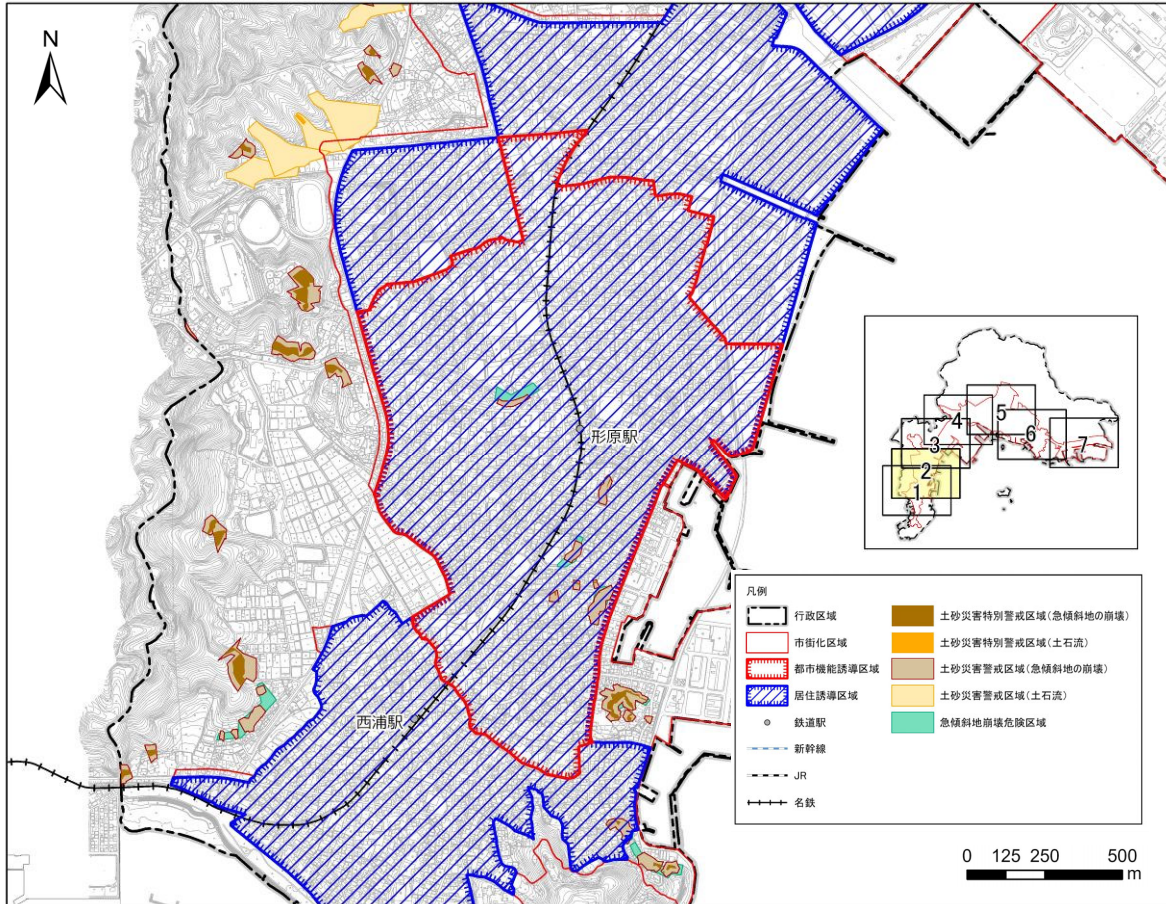




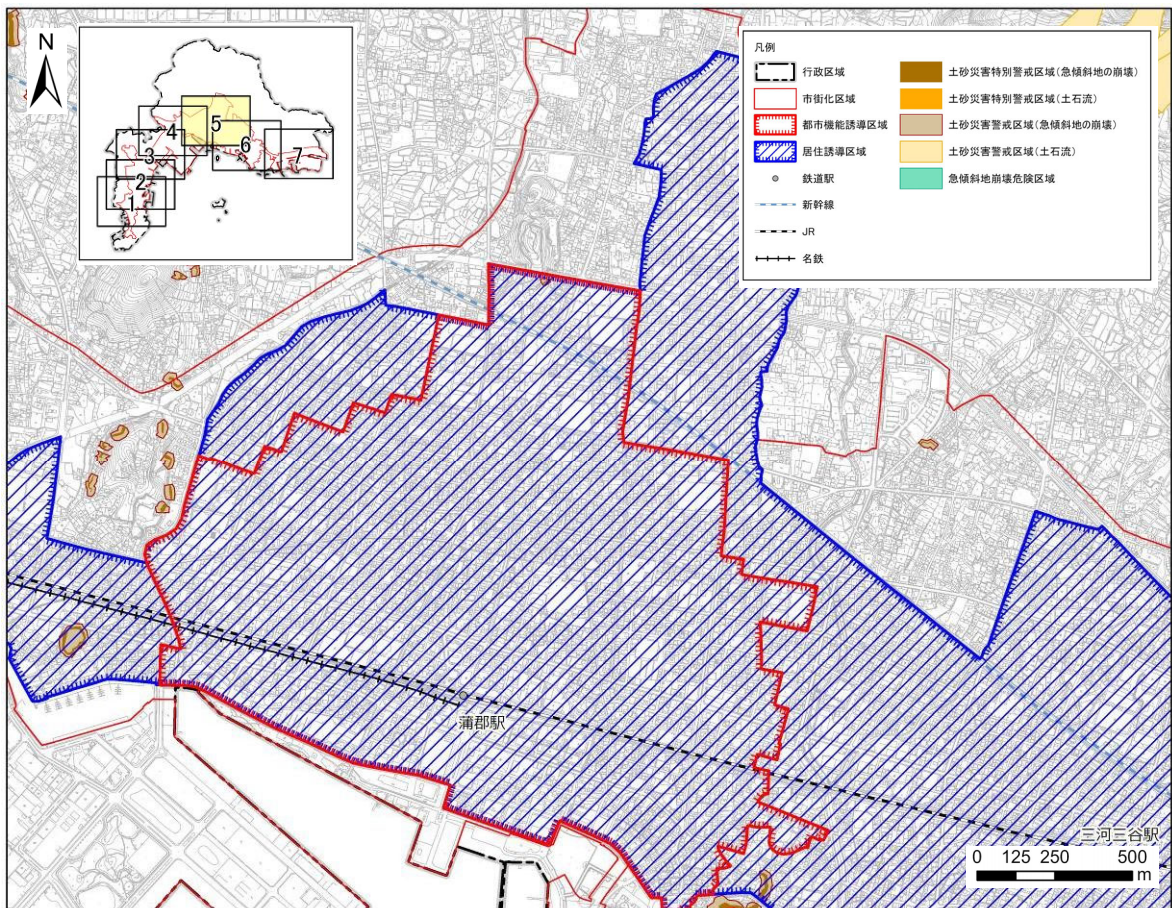
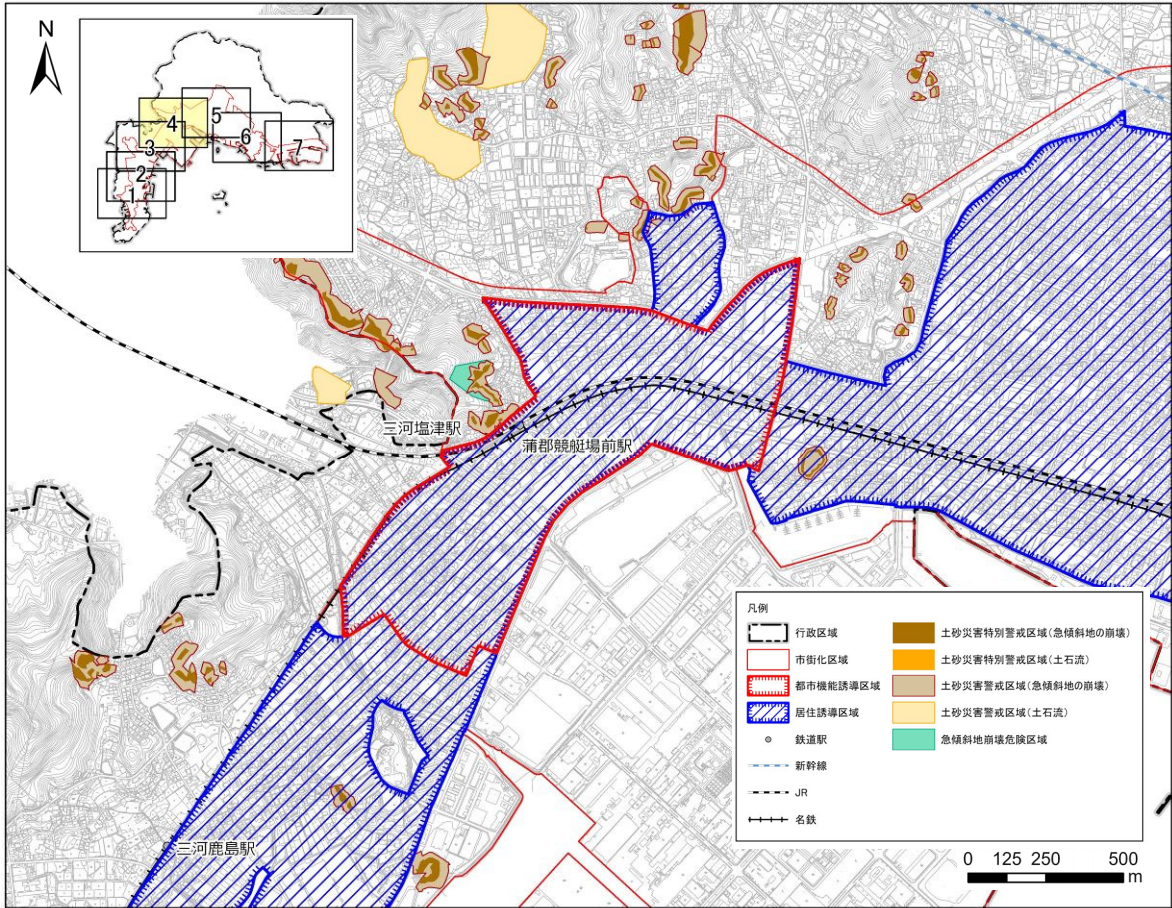


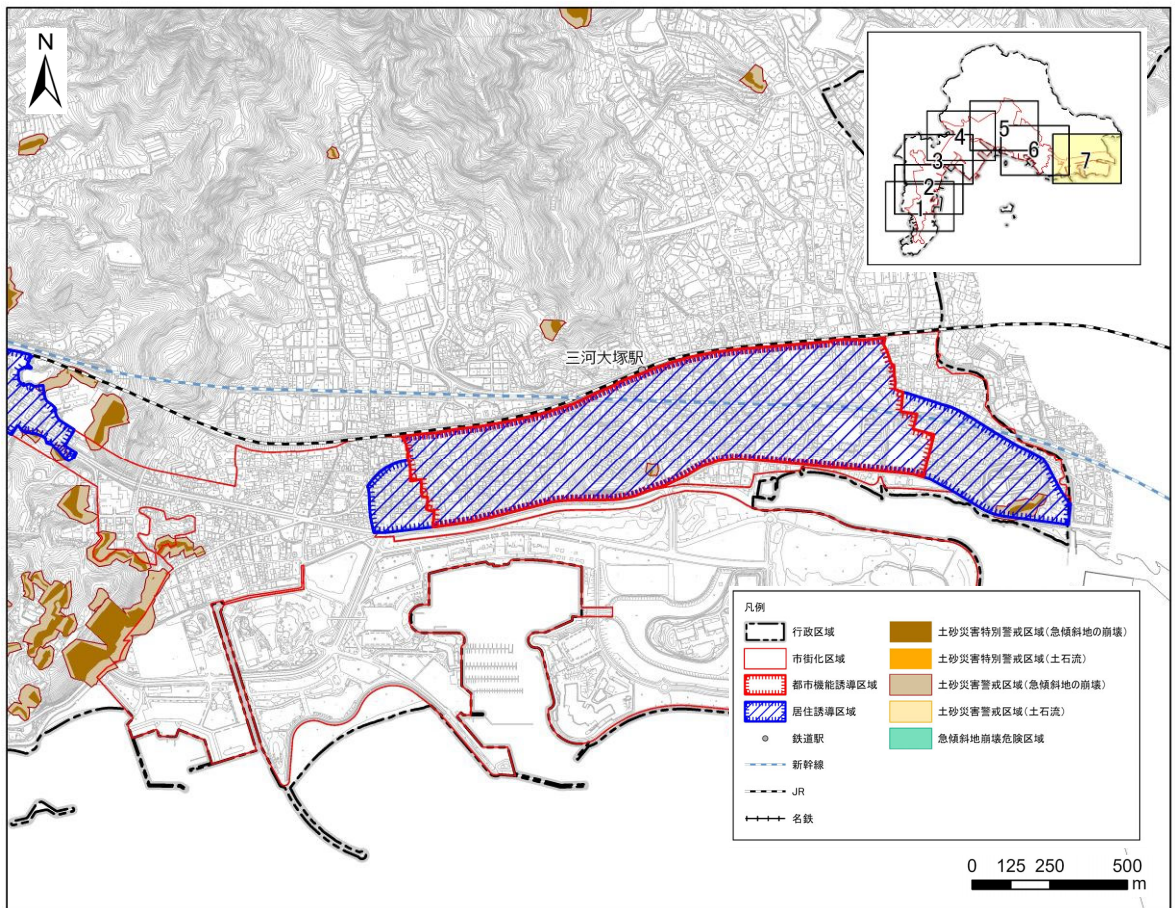
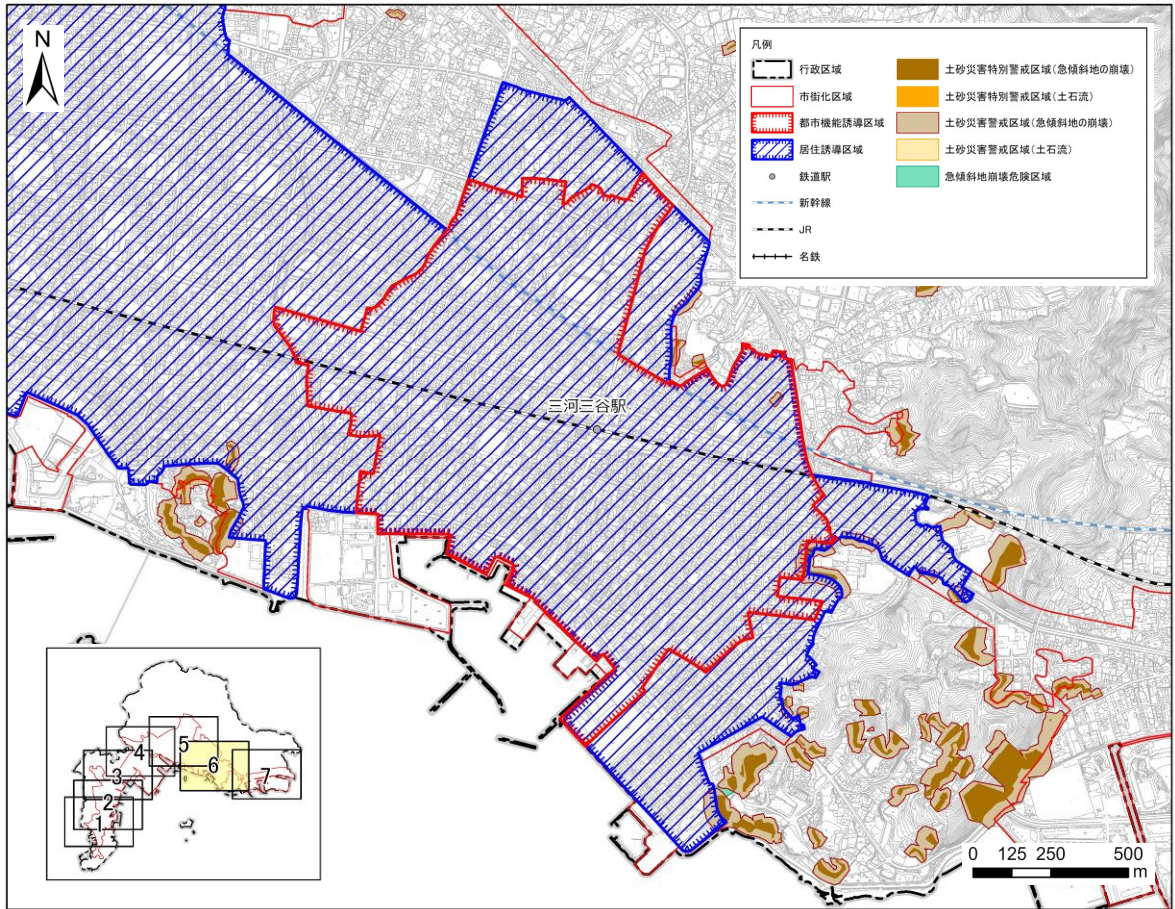
⑦ 土砂災害警戒区域、土砂災害危険箇所



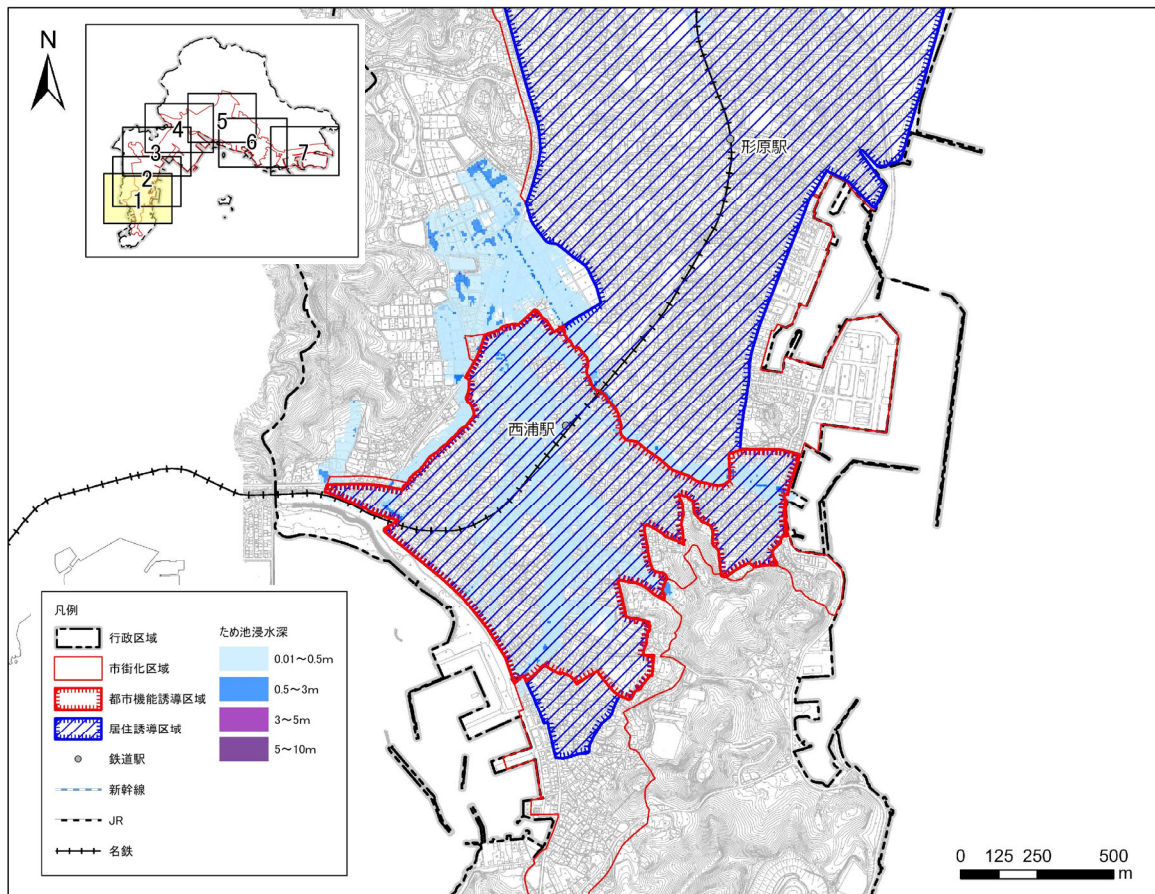
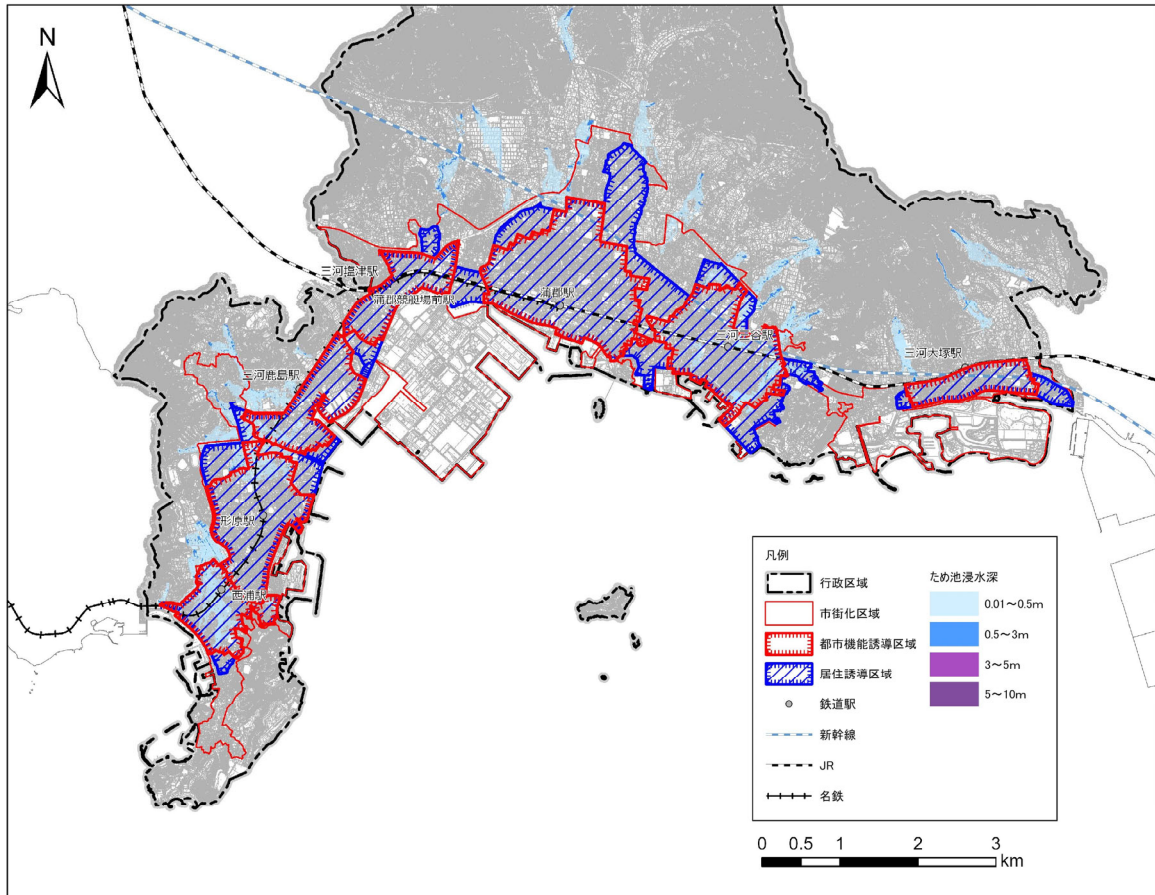


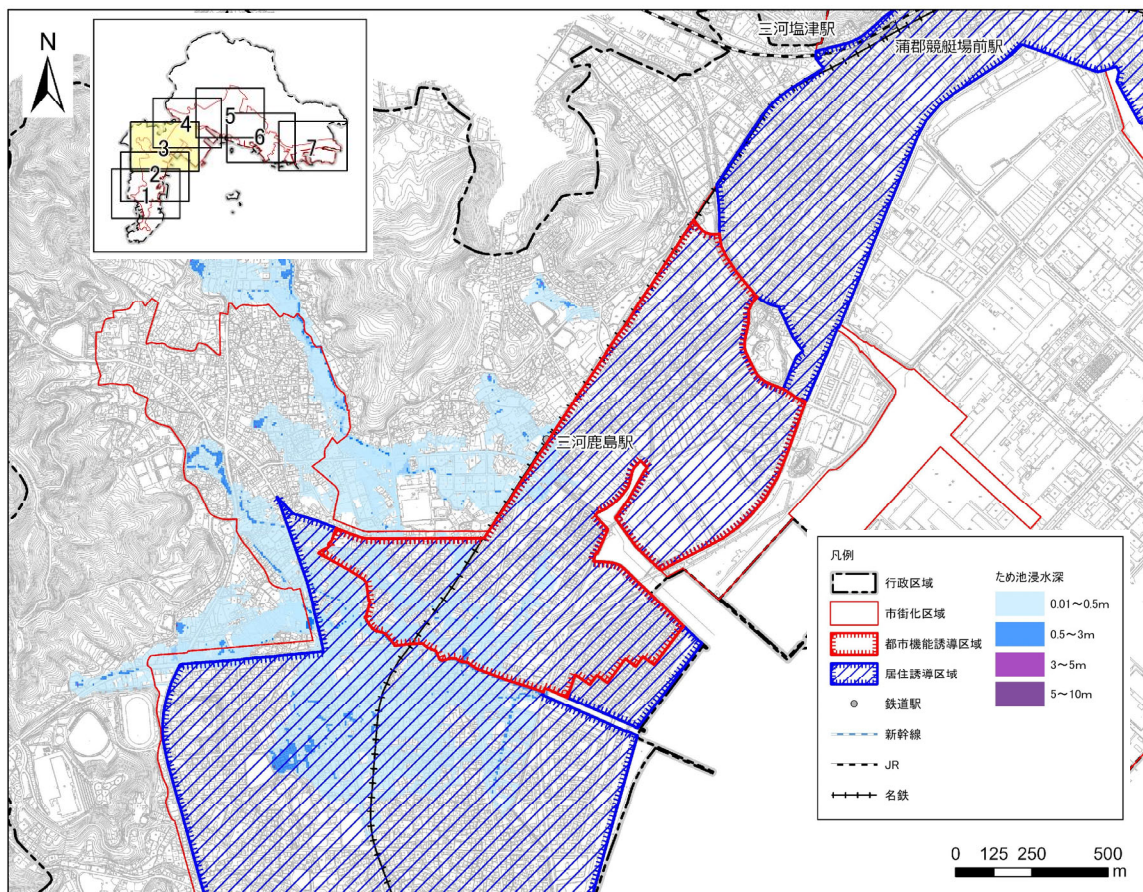
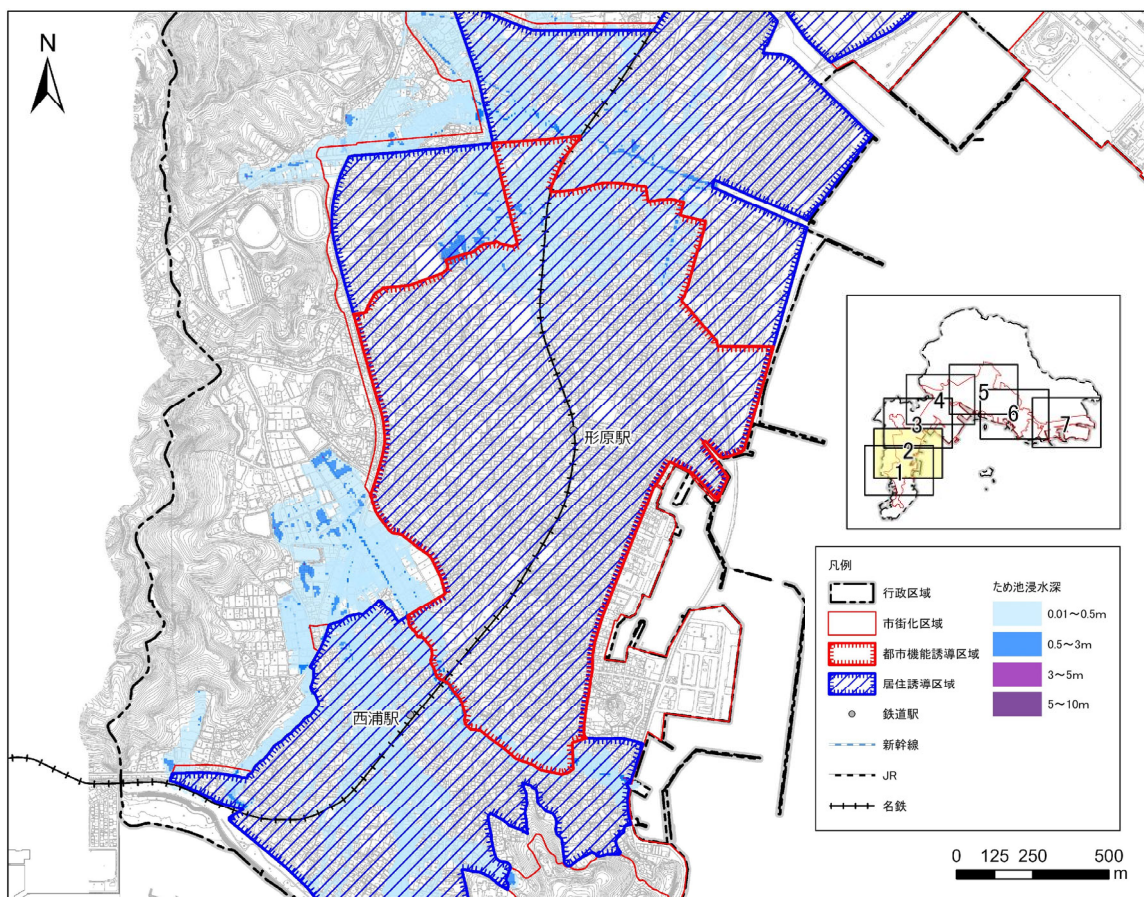
# 4 居住誘導区域の検討



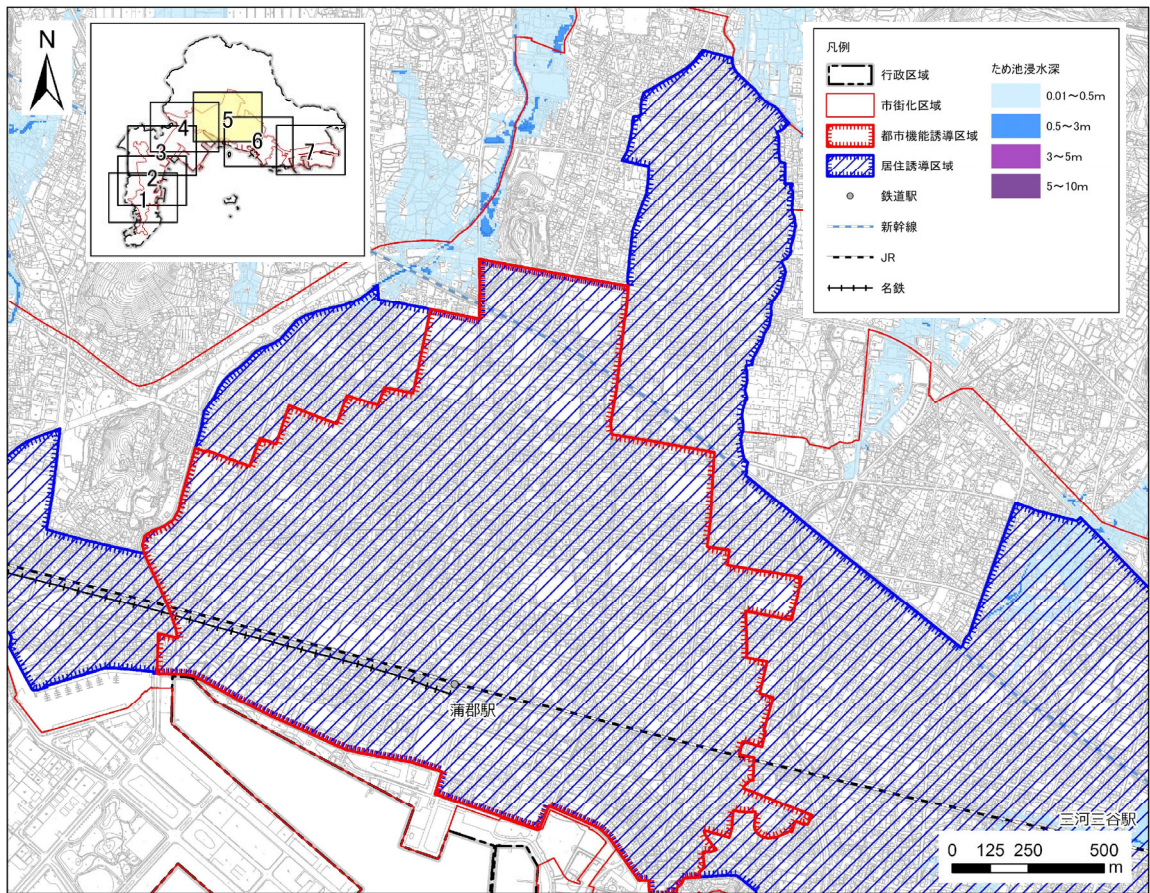
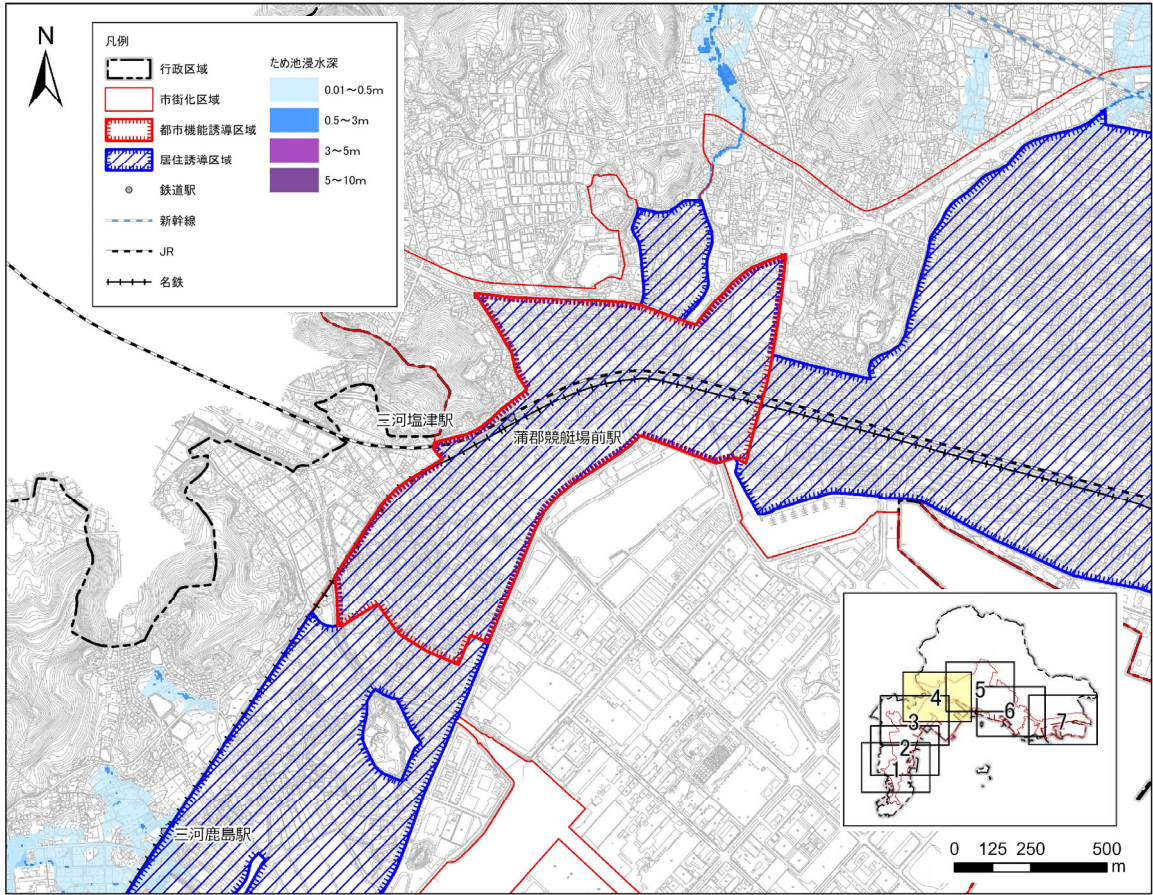


⑧ ため池決壊のリスク

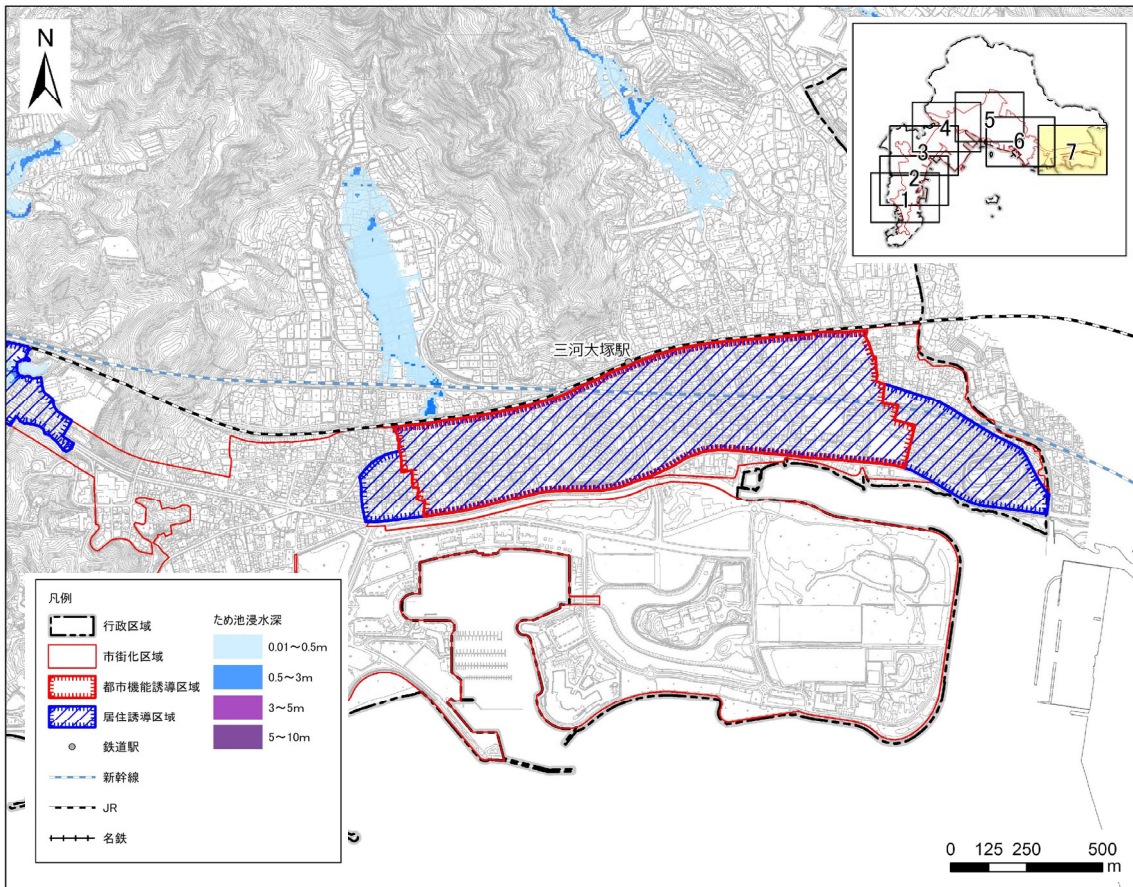
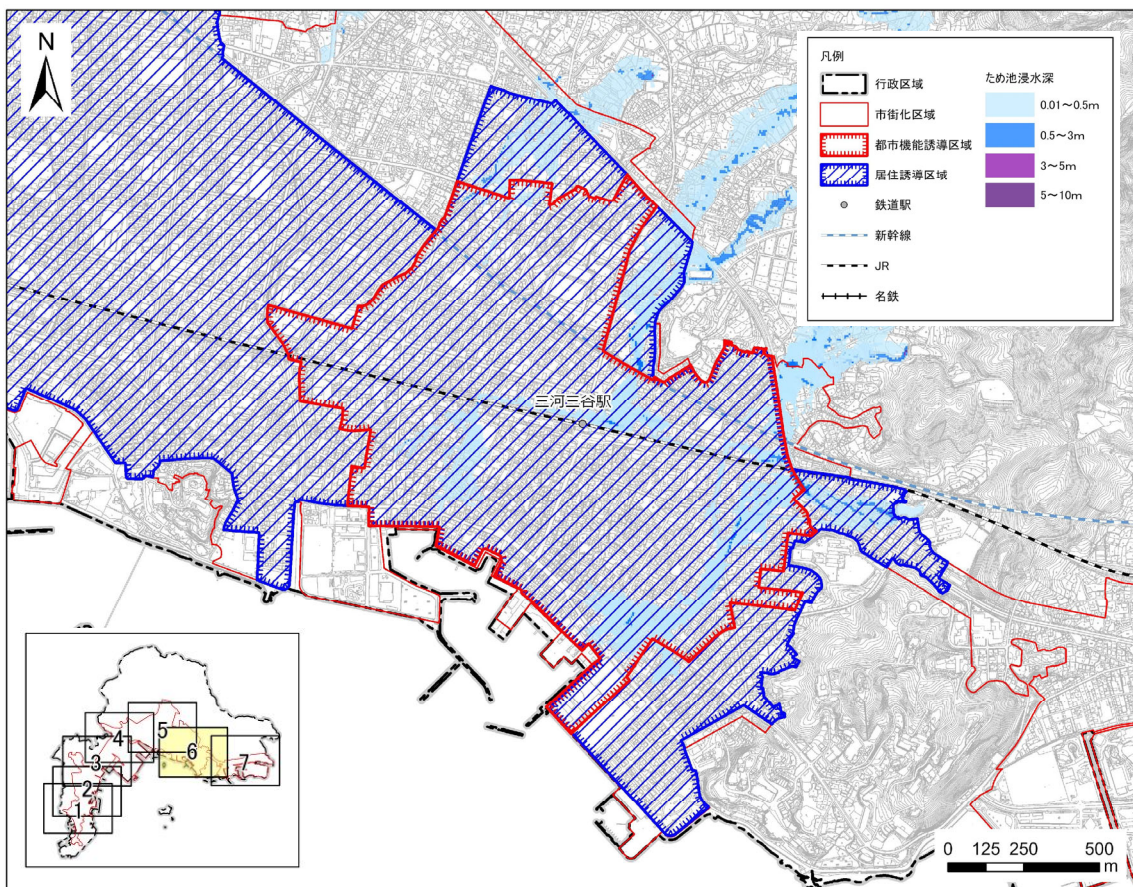




# 4 居住誘導区域の検討







## 居住誘導区域、都市機能誘導区域の面積

区域	計画策定時		計画改訂時
	面積(ha)	面積(ha) 土砂災害の関連区域※ を除く	面積(ha) 土砂災害の関連区域※および 家屋倒壊等氾濫想定区域(河 岸侵食)を除く
居住誘導区域	1202.76	1,200.48	1,173.95
都市機能誘導区域	891.15	889.34	880.25
西浦駅	81.27	80.84	80.88
形原駅	154.71	153.38	153.46
三河鹿島駅	98.83	98.83	97.77
三河塩津駅	79.17	79.17	78.62
蒲郡駅	255.40	255.38	252.15
三河三谷駅	164.89	164.86	160.51
三河大塚駅	56.88	56.86	56.86

※土砂災害の関連区域：「土砂災害特別警戒区域」「災害危険区域」「急傾斜地崩壊危険区域」のいずれかに指定されている区域

(令和5年12月時点の集計値)

	市域に対する割合 (市域面積:5,696ha)	市街化区域に対する割合 (区域面積:2,054ha)
居住誘導区域 (1,173.95ha)	21%	57%
都市機能誘導区域 (880.26ha)	15%	43%

(令和5年12月時点の集計値)